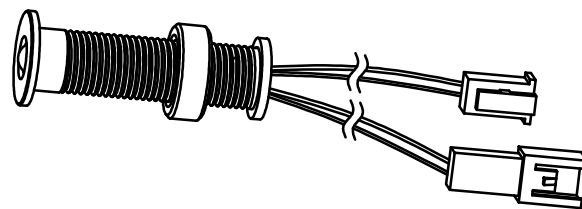


# IP44 LED ROUND PLINTH LIGHT KIT

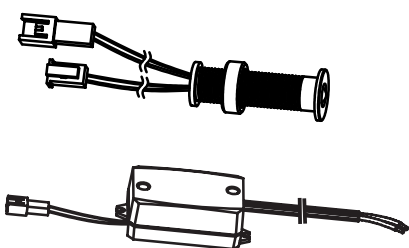
## INSTALLATION INSTRUCTIONS

CODE:SE10139CW/WW



**IMPORTANT:** please read these instructions before commencing installation and retain for future reference.

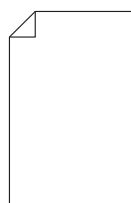
### Components



4 x SE10139  
1 x Driver



2 x Screws (for driver)



1 x Fitting Instructions

### Tools required



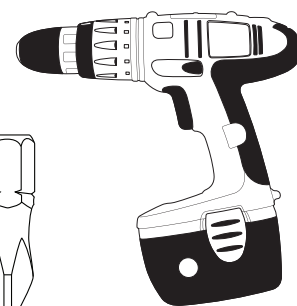
Pencil



10mm  
Drill Bit



PZ1 Screw Bit



Power Drill

### Important safety information

Please read these instructions carefully before attempting to install this product. It is advisable to keep these instructions in a safe place for further reference.

**We recommend that you consult a qualified electrician. All electrical installations must be carried out in accordance with current IEE wiring regulations (BS7671).**

These products must not be modified, if any modifications are made, it may invalidate the warranty and may render the product unsafe. These LED lights operate low voltage (12V).

**Do not wire the individual LED light fittings directly to the mains. This product is for indoor use only. Keep out of moisture and use only in dry rooms.**

- If in doubt installation must be carried out by a qualified electrician.
- Install on smooth flat surface(s) only.
- The Wattage of this product is 0.16W per light.  
The driver in the pack can run a maximum of 37 fittings.

### Safety instructions

1. Before commencing installation or maintenance, isolate the main electrical supply for the appropriate circuit at the fuse board.
2. This product requires a 12V LED driver.
3. The light should be mounted onto a secure surface.
4. Position lights where they will not be exposed to steam or splashes etc.
5. Suitable for furniture lighting.
6. When the lamp expires the fitting must be replaced.
7. Class III safety extra low voltage (SELV).

#### Waste Electrical & Electronic Equipment (WEEE)

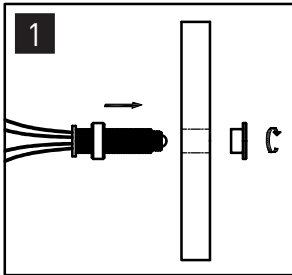
The Symbol on the product, or on the document accompanying the product, the crossed out wheelee bin symbol, indicated that this product may not be treated as household waste. Instead it shall be handed over to the applicable collection point for the recycling of electrical and electronic waste.



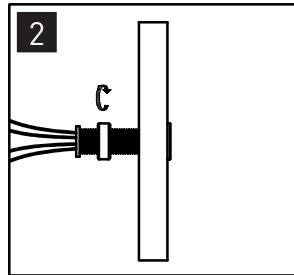
**RoHS** ✓  
Compliant



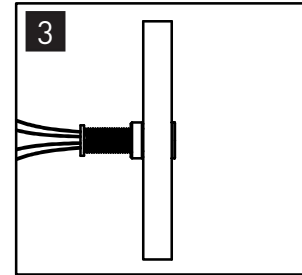
## Installation



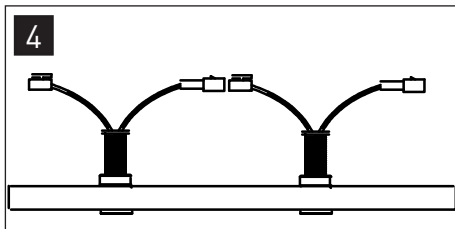
Drill hole through the board and take off the metal head, put the light through the hole.



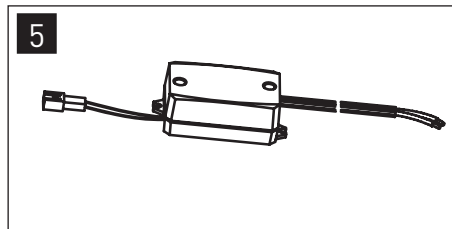
Then put the metal head on the light, last rotate the plastic screw, and tighten it to the board.



Make sure the light is securely fixed in place by the plastic screw.

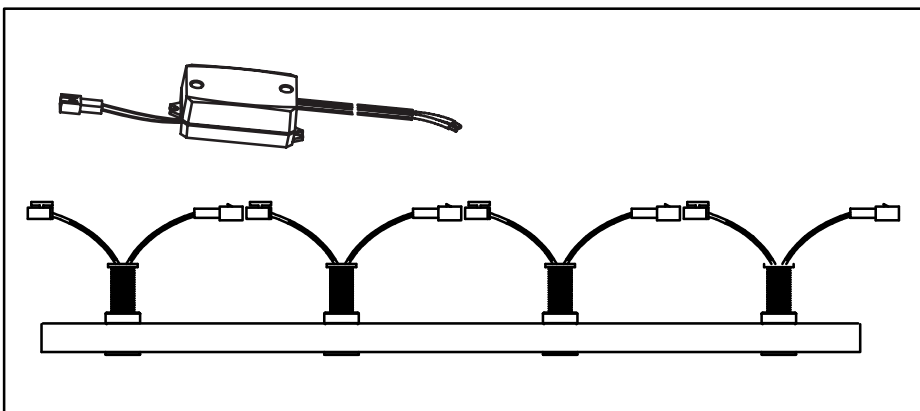


Connect each light together as above method.



Finally wire the last light to the output side of the driver, and wire the input side cable to 240V mains supply.

## Operation



The SE10139 plinth lights are to be daisy chained via the LED plugs and are finally connected to the plug on the driver.

## Maintenance & Care

- Ensure that the power is disconnected prior to cleaning.
- To keep the finish of this product, wipe over with soft cloth periodically.
- Do not use harsh chemical solvents, it may dis-colour or damage the finish.